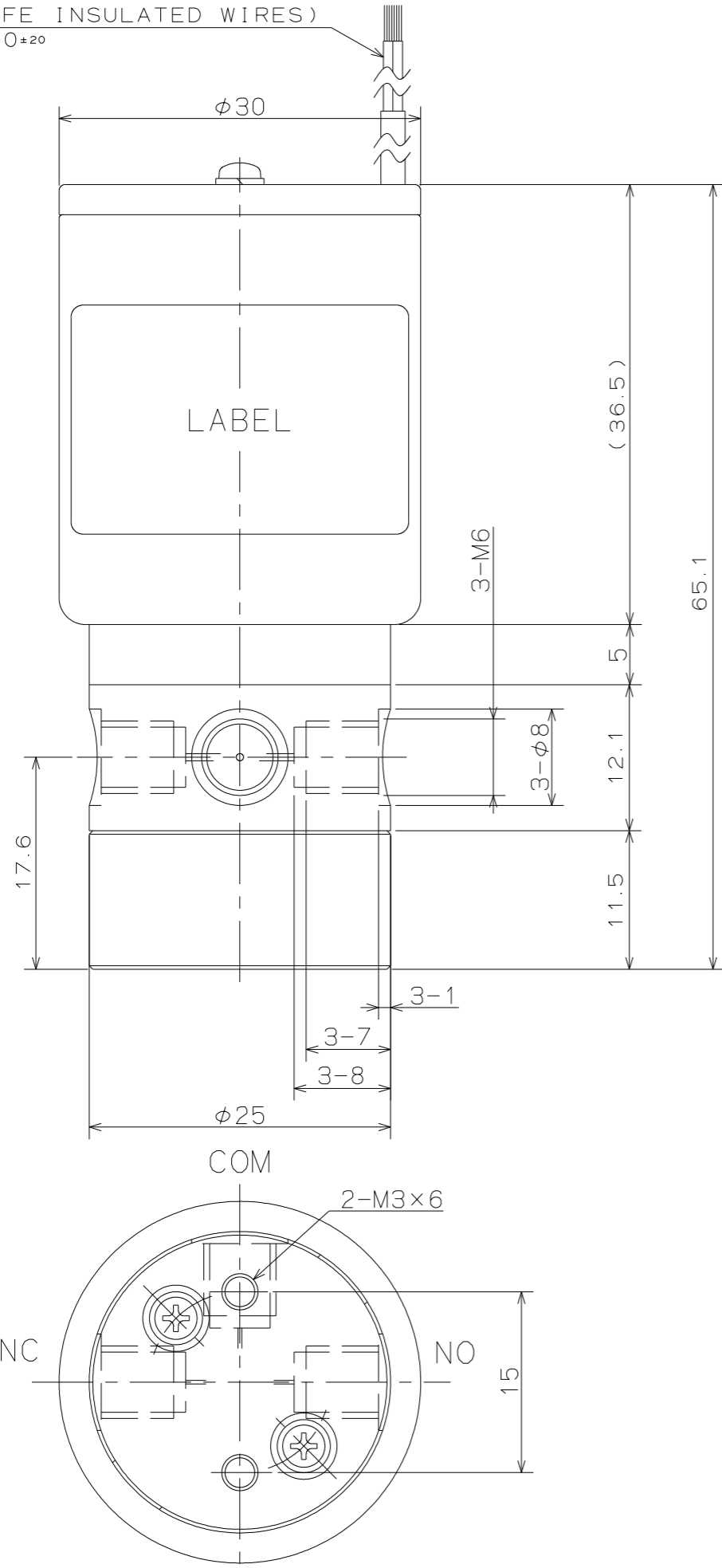


LEADS(ETFE INSULATED WIRES)  
 □0.2×L350±20



FOR REFERENCE ONLY

# SOLENOID VALVE

## SPECIFICATIONS for MODEL MLV-3-M6H-X

- ORIFICE DIAMETER : 0.3mm
- PORT CONNECTION : M6
- OPERATING PRESSURE RANGE : COM -0.09 ~ 1.5MPa  
 { -675mmHg ~ 15bar }
- NC, NO : 0 ~ 0.1MPa  
 { 0 ~ 1bar }
- FLUID MEDIA : FLUIDS CHEMICALLY COMPATIBLE WITH MATERIALS BELOW
- MEDIA TEMPERATURE RANGE : -5 ~ 70°C
- AMBIENT TEMPERATURE RANGE : 0 ~ 50°C
- RATED VOLTAGE : DC12V, DC24V
- POWER CONSUMPTION : 4.4W
- DUTY CYCLE : CONTINUOUS
- COIL TEMPERATURE INCREASE : MAX. 60°C FROM ROOM TEMPERATURE
- INSULATION CLASS : CLASS B
- DIELECTRIC STRENGTH : 1500VAC FOR 60s

### WETTED MATERIALS

△									
△					3	DIAPHRAGM	PTFE	2	
△					2	STEM	Al <sub>2</sub> O <sub>3</sub>	1	
SYM.	DATE	DESCRIPTION			1	VALVE BODY	PPS	1	
REVISION					PART NO.	PART NAME	MATERIAL	REQD.	NOTE
SCALE	APPROVED	CHECKED	DESIGNED	DRAWN	SOLENOID VALVE			DRAWING NO	
2:1				yyamada	MLV-3-M6H-X			XXXXX-00-E	
A3									